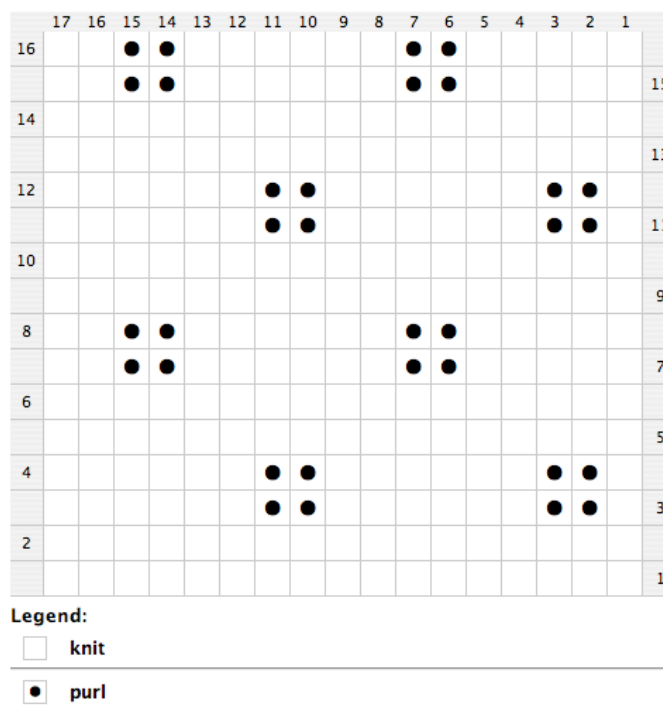


Sugar Cubes



Flat Panel

Multiple of 8 sts plus 1.

R1, 5,: K across

R2, 4, 6, 8: K the knit sts and P the purl sts of the row below

R3: K1, *P2, K6; rep from * to end

R7: K5, *P2, K6; rep from * to last 4 sts, end p2, k2.

Repeat rows 1-8 for pattern.

Circular

Multiple of 8 sts.

R1, 2, 5, 6: K across

R3, 4: K1, *P2, K6; rep from * to end

R7, 8: K5, *P2, K6; rep from * to last 4 sts, end p2, k2.

Repeat rows 1-8 for pattern.

The directions in this document are provided to you under the [Creative Commons Attribution-NonCommercial-ShareAlike 3.0 Unported License](https://creativecommons.org/licenses/by-nc-sa/3.0/). You are free to share and remix this work as long as you attribute the [Loom Knitting Help](http://www.loomknittinghelp.com/) website (<http://www.loomknittinghelp.com/>), use it for non-commercial purposes, and distribute any changes under the same or similar license. See [here](#) for the full legal code.